

HIGH CAPACITY DRY GRADULATION CHILSONATOR



Consistent Results in Moisture and
Pressure Sensitive Products



Precise granulation under
controlled conditions

1 X FITZPATRICK 16L X 20D / SPV – HASO 30 (2009) CHILSONATOR SYSTEM.

KEY FEATURES & BENEFITS

CONSISTENT & REPEATABLE PRODUCTION

Ensures uniformity in colour, taste, flowability, density, and chemical reaction.

VERSATILE PROCESSING

Quickly switch between processes with reversible rotor and blade edges.

EASY MAINTENANCE

Fast disassembly for cleaning, minimal routine maintenance

ENHANCED SAFETY

Shielded machine, enclosed moving parts, safety interlock feature.

CUSTOMIZABLE MOTORS & CONTROLS

Available for every electrical standard and application requirement.



DRY GRANULATION IN AN ISOLATED ENVIRONMENT

Process hazardous materials safely in a contained system, protecting operators and the environment.

INDUSTRIES

- PHARMACEUTICAL
- CHEMICAL
- FOOD
- PLASTICS
- AND MORE



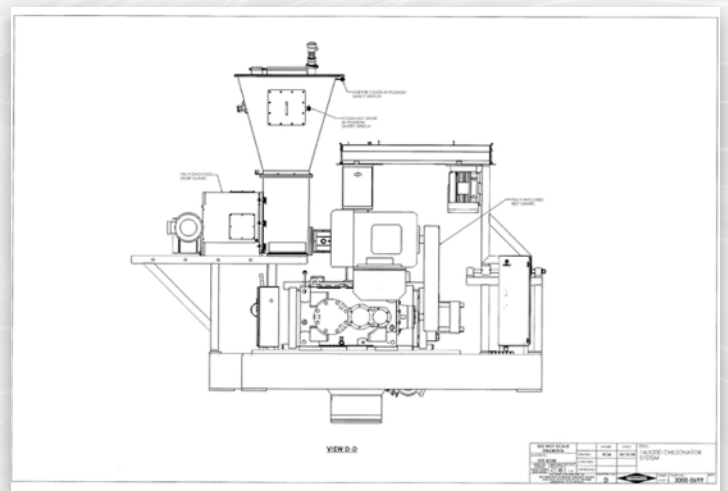
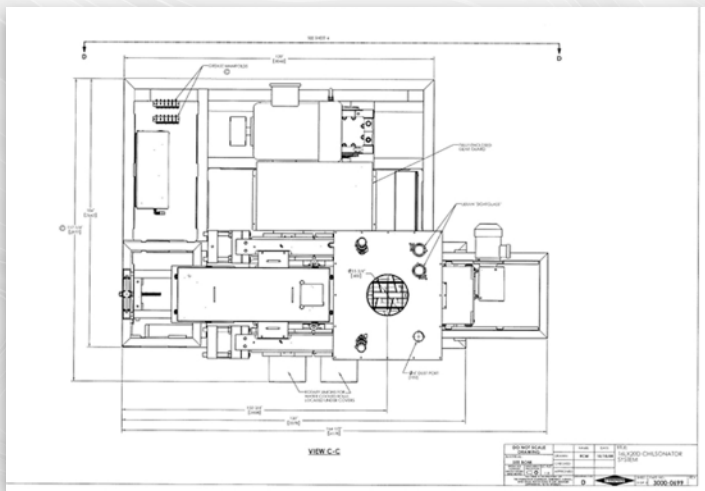
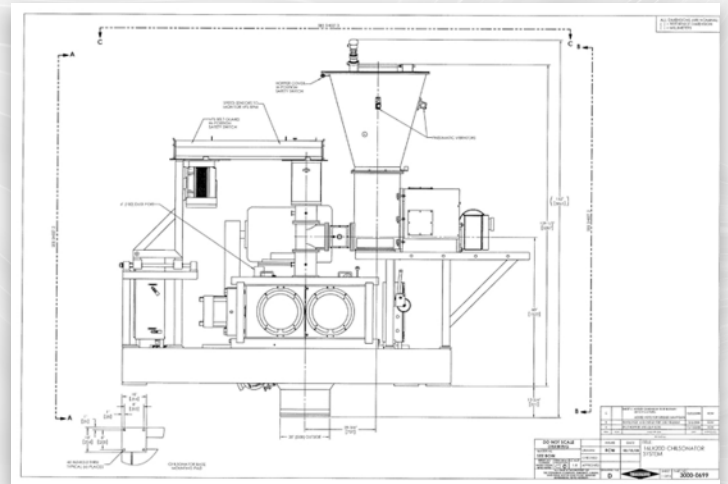
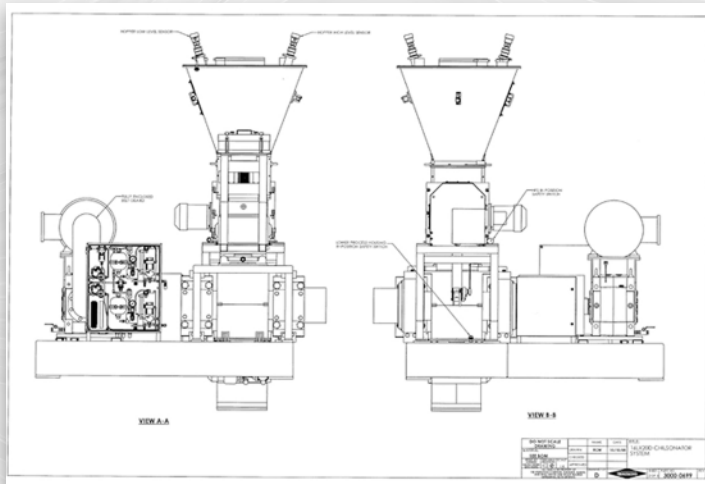
MODEL 1 X FITZPATRICK 16L X 20D / SPV



MODEL "HASO30 COMMINUTING MACHINE



TECHNICAL SPECIFICATIONS



PERFORMANCE SPECIFICATIONS TABLE

The Fitzpatrick C°	Chilsonator Capacity Chart			
Fitz- Mill	Roller Width x Dia	Roller Speed	Linear Roller Pressure (Max)	Throughput Capacity (Max)
Model N°	Inches (cm)	RPM	lbs / Inch (kg / cm)	lbs / Hr (kg / Hr)
IR220	75 x 8 (190.5 x 20.32)	4 to 14	15,000 (2680)	22.04 (10)
CCS220	75 x 8 (190.5 x 20.32)	4 to 14	15,000 (2680)	22.04 (10)
IR520	2 x 8 (5.08 x 20.32)	6 to 24	15,000 (2680)	242.44 (110)
IR 4L x 10D	4 x 10 (10.16 x 25.4)	6 to 24	10,000 (1786)	1542.8 (700)
CCS1025	4 x 10 (10.16 x 25.4)	6 to 24	10,000 (1786)	1542.8 (700)
4B 4L x 10D	4 x 10 (10.16 x 25.4)	6 to 24	19,650 (3510)	1542.8 (700)
7L x 10D	7 x 10 (17.78 x 25.4)	6 to 24	11,900 (2126)	2755 (1250)
12L x 12D	12 x 12 (30.48 x 30.48)	6 to 24	10,300 (1840)	5510 (2500)
12L x 16D	12 x 16 (30.48 x 40.64)	6 to 24	16,800 (3001)	7438.5 (3375)
12L x 20D	12 x 20 (30.48 x 50.8)	6 to 24	19,625 (3506)	9367 (4250)
16L x 20D	16 x 20 (40.64 x 50.8)	6 to 24	19,625 (3506)	12783.2 (5800)
IRP1250	5 x 20 (12.7 x 50.8)	24	30,500 (5448)	11020 (5000)
IRP2550	10 x 20 (25.4 x 50.8)	24	30,500 (5448)	22040 (10000)

SYSTEM MAIN COMPONENTS

FITZPATRICK CHILSONATOR MODEL 16L X 20D HASO30

	Description	Function	Accessories
1.00	Infeed Rotary Valve (Individual Item)	Provides a metered feed of both Fresh & Recycled Product to the system	Drive Motor & Speed Indicating Controller, Instrumentation
2.00	Upper Feed Hopper (Part Of Quadro Chilsonator 16LX20D)	Provides buffered product storage above Horizontal Feed Screw (HFS)	Mechanical Agitator & Pneumatic Vibrators
3.00	Horizontal Feed Screw - HFS (Part Of Quadro Chilsonator 16LX20D)	Moves product from Upper Feed Hopper towards Vertical Feed Screw (VFS)	Drive Motor & Speed Indicating Controller, Instrumentation
4.00	Vertical Feed Screw - VFS (Part Of Quadro Chilsonator 16LX20D)	Moves product from HFS downwards to Compactor Rollers	Drive Motor & Speed Indicating Controller, Instrumentation
5.00	Compactor Rollers (Part Of Quadro Chilsonator 16LX20D)	Compacts / Crushes Product between Rollers	Drive Motor & Speed Indicating Controller, Roller Shell CW Cooling System, Instrumentation
6.00	Compactor Rolls Pressure System (Part Of Quadro Chilsonator 16LX20D)	Provides Pressure Control applied to the Front & Back of the Rollers	Pneumatic Oil Pumps (Front & Rear) & Associated Instrumentation
7.00	Sheet Breaker (Part Of Quadro Chilsonator 16LX20D)	Breaks the Sheet of Product after Compactor Rollers above Primary Mill	Drive Motor & Speed Indicating Controller, Instrumentation
8.00	Primary Mill (Part Of Fitzpatrick FitzMill HAS030)	Mills the Broken Sheet of Product above Screener	Drive Motor & Speed Indicating Controller, Instrumentation
9.00	Screener (Part Of GKM Tumbler Screen KTS2600/2)	Screens / Separates Milled Product into Overs, Good & Fines	Drive Motor & Speed Indicating Controller, Instrumentation
10.00	Transfer Rotary Valve (Individual Item)	Accepts Good Product & delivers this into a Pneumatic Transport System	Drive Motor & Speed Indicating Controller, Instrumentation
11.00	HFS Vacuum Pump (Part Of Quadro Chilsonator 16LX20D)	Extracts air from inside the HFS - Creates a negative pressure inside HFS	Drive Motor & Speed Indicating Controller, Instrumentation
12.00	VFS Vacuum Pump (Part Of Quadro Chilsonator 16LX20D)	Extracts air from inside the VFS - Creates a negative pressure inside VFS	Drive Motor & Speed Indicating Controller, Instrumentation

**The Complete System Was Supplied New In
2009**

FITZMILL® COMMINUTORS

SMALL, MEDIUM, OR LARGE-SCALE PRODUCTION

APPLICATIONS INCLUDE:

- COARSED GRINDING AND CHOPPING OF DRY MATERIAL
- SIZE REDUCTION OF WET MATERIAL
- DE-LUMPING OF AGGLOMERATED MATERIAL
- PULVERIZING
- SOLID/LIQUID BLENDING
- GRANULATING COMPACTED MATERIAL
- PROCESSING SLURRIES AND LIQUIDS
- PUREEING AND EMULSIFYING

This versatile and compact unit is designed for laboratory and small production applications. The FitzMill® combination offers efficient dry compaction with integrated size reduction, ensuring the desired material properties, including particle size distribution and density

CONTACT PROQUIP SOLUTIONS TODAY

For more information or any questions, contact us

 **+64 (0) 9 263 0578**

 **AssetSales@proquipx.com / steve@proquipx.com**